

SAGE ACCPAC



sage
software

Sage Accpac ERP offers the freedom of choice, seamless integration, high performance, and reliability that forward-thinking companies rely on to increase profitability and gain competitive advantage.



World-Class Architecture

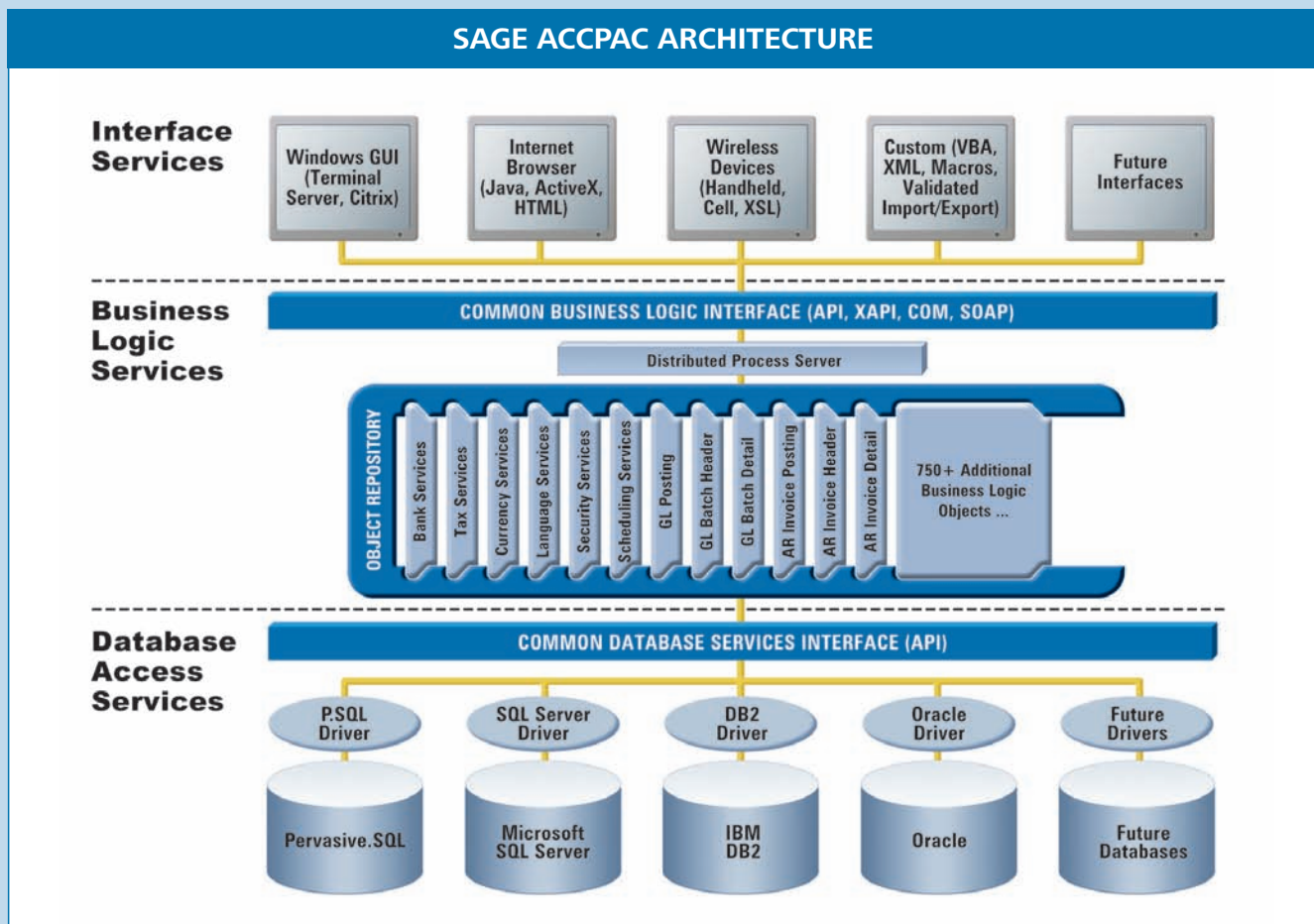
Sage Accpac ERP (formerly ACCPAC Advantage Series) is an advanced accounting application built on a world-class, object-oriented, and multitiered architecture. Designed for companies of all sizes, Sage Accpac can be deployed both as a Web-based and desktop application, and is the foundation for an integrated set of end-to-end business management applications.

You choose the solutions that work best for you: the applications, database, and deployment options, the user interface and languages, the network environment or operating system, the add-on software developed by Sage Software or independent industry experts, and the customized features that help you operate more efficiently and profitably.

Ultimate Scalability

From single-user remote locations to large corporate environments with demanding accounting needs, no other product scales like Sage Accpac. With Sage Accpac, you can seamlessly upgrade from one edition to the next as your business requirements expand. When you upgrade, your data and custom reports easily move with you.

All Sage Accpac editions have an identical user interface, making it easy to adapt to the next edition without costly staff retraining or data conversion. Sage Accpac also enables data processing to be distributed across multiple servers, so as your number of users increases, multiple servers can share the processing load.



Sage Accpac is built upon industry-leading architecture that stands the test of time—quickly adapting to new technologies and easily integrating external applications for effective information exchange.

Completely Web-Based

Sage Accpac has changed the rules for mid-market business management solutions by offering complete access to your accounting system through a standard Web browser. No longer limited by location, now you can access Sage Accpac anywhere, anytime through our easy-to-use, Web-based interface.

Easy to Use and Customize

Sage Accpac is easy to set up and use, with intuitive wizards and a familiar interface that makes configuration and navigation a breeze. Embedded Microsoft Visual Basic for Applications (VBA) lets you easily expand, customize, and integrate your Sage Accpac application. From simple desktop personalization to user-specific customization, Sage Accpac adapts to the way you do business.

Total Investment Protection

Sage Accpac is a complete system designed to deliver significant competitive advantages to your business today—with the investment protection you need to upgrade quickly and easily from one edition to the next as your business requirements expand. Our value-added protection plan is offered across all of our product lines.

"Sage Accpac takes a sovereign position in mid-market solutions for the breadth of its integration. Architected for the Web, the object-oriented technological infrastructure has served the company well in supporting a total back-office to front-office integration of the complete product line."

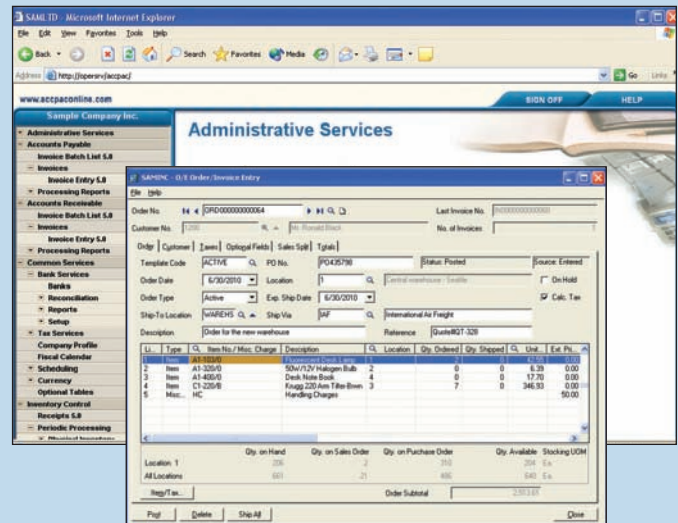
Dr. Katherine Jones
Aberdeen Group

Designed for Global Business

In today's global marketplace, competition extends well beyond a country's borders. Sage Accpac supports multiple languages and is designed to satisfy the most demanding international requirements. A truly global application, Sage Accpac supports multiple currencies, value-added taxes, GST, and local accounting requirements so that you can be confident you have what it takes to compete worldwide.

Hundreds of Industry-Specific Solutions

Sage Software has an extensive network of more than 400 development partners who develop and market a wide range of industry-specific applications that enhance and extend Sage Accpac for specific industries and special business needs. Whatever your industry, Sage Software provides cost-effective, reliable business management applications that fit your needs.



Web Desktop and Order Entry screens in Sage Accpac allow secure access to business functions—anytime, anywhere.

SAGE ACCPAC MODULES

- System Manager
- General Ledger
- Accounts Receivable
- Accounts Payable
- Inventory Control
- Order Entry
- Purchase Orders
- Payroll (U.S. and Canadian)
- Project and Job Costing
- Multicurrency
- Transaction Analysis and Optional Field Creator
- National Accounts Management
- G/L Security
- G/L Consolidations
- Intercompany Transactions
- Process Server

PLATFORMS/CERTIFICATIONS*

- Network Server: Microsoft Windows 2003, Microsoft Windows 2000, Microsoft Windows NT, Novell NetWare, and Linux
- Workstation: Microsoft Windows XP Professional, Microsoft Windows 2000, Microsoft Windows 98, Microsoft Windows NT, and Linux
- Database: IBM DB2, Microsoft SQL Server, Pervasive.SQL, and Oracle

*For up-to-date information about supported platform versions and certifications, please visit www.accpac.com/products/system_requirements.asp

All three editions of Sage Accpac are built from the same Web-based, multitiered technology. Choose the one that meets your business requirements.



Sage Accpac 100 ERP

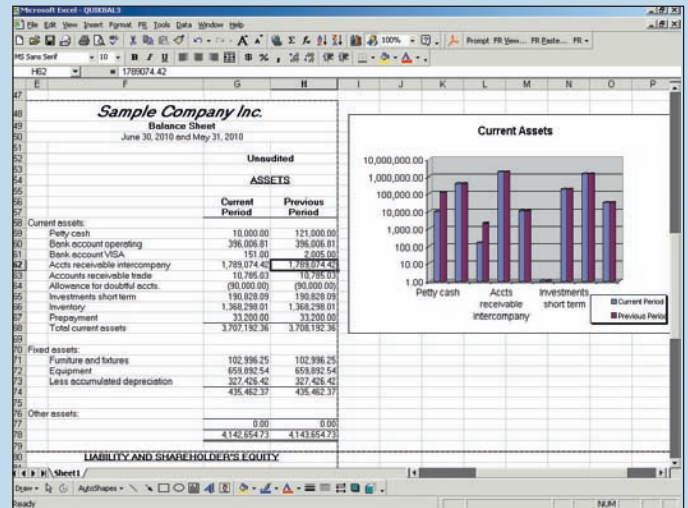
Sage Accpac 100 ERP is a completely Web-based application specifically designed for the growing company that requires a complete accounting and operations solution. This scalable solution provides you with the financial management power you need—at a price you can afford. Like all editions, Sage Accpac 100 is built from open, multitiered technology, allowing you to efficiently increase the functionality and capabilities of your software as your business grows.

Customer Profile

Sage Accpac 100 is designed for customers with no more than five concurrent users and provides powerful accounting and operations management tools, extensive reporting capabilities, e-business readiness, and a secure growth path. Sage Accpac 100 ensures that your accounting solution evolves with your business.

Modules

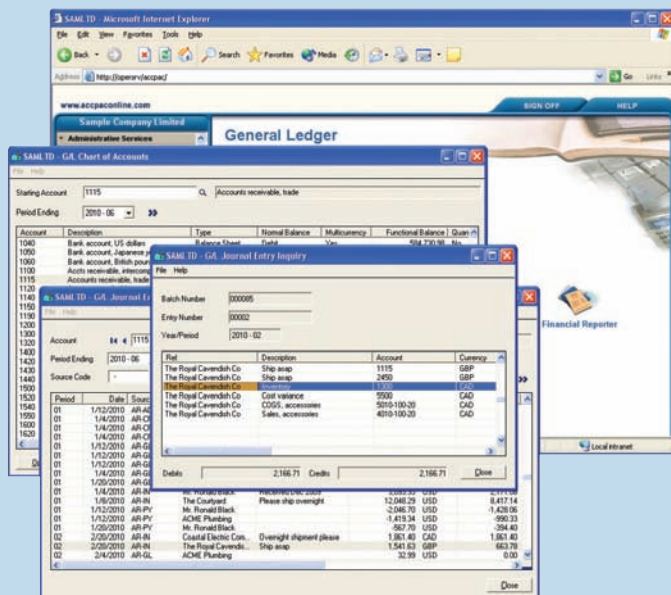
System Manager (includes Sage Accpac iConnect Server, Bank Reconciliation, and Microsoft VBA), General Ledger, Accounts Receivable, Accounts Payable, Inventory Control, Order Entry, Purchase Orders, U.S. Payroll, Canadian Payroll, G/L Consolidations, Intercompany Transactions, Process Server, National Accounts Management, Optional Fields and Validation Tables, Project and Job Costing, Multicurrency, and Additional Languages.



With Sage Accpac Insight, powerful and flexible financial reporting is fully integrated with Microsoft Excel.

“Sage Accpac has fulfilled all of our objectives in terms of financial reporting and our ever-expanding chart of accounts. With Sage Accpac business analysis tools, we are more confident than ever in our ability to make the best possible decisions for our company. With such a seamless conversion of our data and significant gains in productivity and efficiency, it is clear that Sage Accpac was the right choice for NAA.”

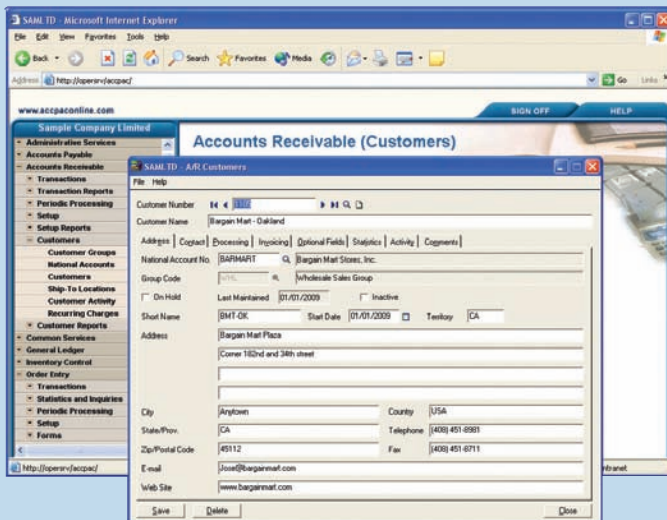
Steve Harfst, COO
North America Airlines



Cross-module capabilities let you drill down to the original transaction.

Sage Accpac 200 ERP

Sage Accpac 200 ERP is a completely Web-based, affordable, and expandable business management solution designed for midsized accounting environments. It offers powerful analysis and reporting tools and a complete accounting feature set, with operations management capabilities. You'll find it's easy to upgrade as your business needs expand because it is built on the same superior architecture as Sage Accpac 500 ERP.



Take advantage of powerful AR features to make the most of your customer and contact information.

Customer Profile

Sage Accpac 200 is right for businesses that require a fully integrated, feature-rich financial management application that supports as many as ten concurrent users. These customers demand powerful analysis and reporting tools and a complete accounting feature set with operations management capabilities.

Modules

System Manager (includes Sage Accpac iConnect Server, Bank Reconciliation, and Microsoft VBA), General Ledger, Accounts Receivable, Accounts Payable, Inventory Control, Order Entry, Purchase Orders, U.S. Payroll, Canadian Payroll, G/L Security, G/L Consolidations, Intercompany Transactions, Process Server, National Accounts Management, Transaction Analysis and Optional Field Creator, Project and Job Costing, Multicurrency, and Additional Languages.

Sage Accpac 500 ERP

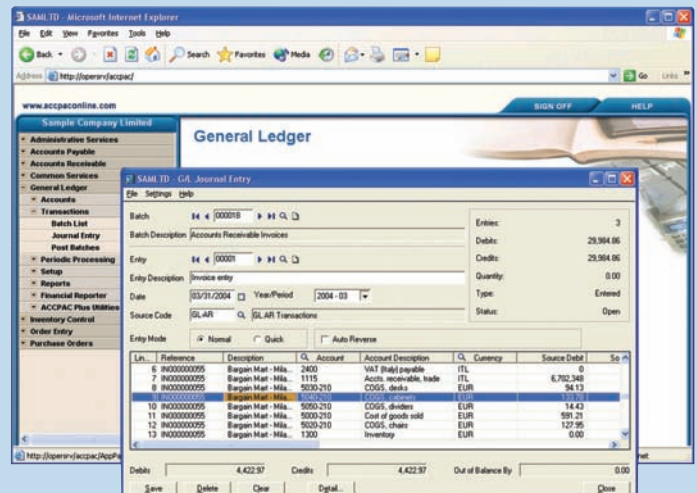
Sage Accpac 500 ERP is a comprehensive Web-based business management solution with powerful financial and operations management, e-business, and customization capabilities. Built on a solid, multitiered, open architecture, this edition supports unlimited users and offers you an easy upgrade path from other Sage Accpac editions.

Customer Profile

Sage Accpac 500 is designed for midsized to large businesses, typically those with multiple locations and a global marketplace. With powerful analysis, reporting, and customization options, this edition is ideal for companies requiring a highly scalable system that supports global business infrastructures and unlimited users.

Modules

System Manager (includes Sage Accpac iConnect Server, Bank Reconciliation, and Microsoft VBA), General Ledger, Accounts Receivable, Accounts Payable, Inventory Control, Order Entry, Purchase Orders, U.S. Payroll, Canadian Payroll, G/L Security, G/L Consolidations, Intercompany Transactions, Process Server, National Accounts Management, Transaction Analysis and Optional Field Creator, Project and Job Costing, Multicurrency, and Additional Languages.



Sage Accpac delivers sophisticated multicurrency and global accounting features.

Sage Accpac is the foundation for an integrated set of end-to-end business management applications designed to grow with your business.



Run Your Business Your Way

A wide choice of end-to-end business management applications integrate with Sage Accpac right “out-of-the-box.” These cost-effective, reliable solutions can be implemented all at once or one at a time to fit all your particular business needs—from Web store to warehouse and pre-sales prospecting to post-sales customer care.

In addition, your Sage Accpac system can be enhanced and extended to meet your market-specific requirements, thanks to the availability of a wide range of high-quality integrated vertical tools designed by third-party developers from around the world.

Sage Accpac CRM

Sage Accpac CRM is a comprehensive, award-winning CRM system that provides enterprise-wide access to vital customer, partner, and prospect information—anytime, anywhere. Sage Accpac CRM helps you better manage your business by integrating field sales, internal sales, customer care, and marketing information and is available in-house or as a hosted application at www.sagecrm.com.

ACCPAC HR Series

ACCPAC HR Series helps you accurately and efficiently manage your human resources and employee benefits responsibilities. It keeps your staff up to date with easily accessible information that is calculated and reported in real time and available through the company intranet.

Sage Accpac WMS

Sage Accpac WMS is designed to automate your inventory-handling processes and help you better manage your supply chain. It works as part of a complete operational system by interfacing with radio-frequency hardware, barcoding technology, shipping systems, and other warehouse automation equipment, providing a significantly improved allocation of resources within the warehouse.

Sage Accpac Exchange

Sage Accpac Exchange is a comprehensive electronic data interchange (EDI) solution that complies with traditional EDI technologies and integrates back-office automated transaction processing, Internet trading, and the global EDI network. It makes exchanging data with trading partners easy, no matter what EDI system or value added network (VAN) they are using.

ACCPAC eTransact

ACCPAC eTransact is a quick and affordable way to create a professional Web store that fully integrates with your back-office Sage Accpac accounting system. The powerful software provides automated features and advanced capabilities that makes it easy for customers to serve themselves by shopping and placing orders on the Web.

Sage Accpac ePOS

Sage Accpac ePOS is a comprehensive point-of-sale system for fast-paced, high-volume, multi-site retail operations. It features an intuitive Web-based interface and provides a complete view of your customer activities and inventory that scales to meet even the most complex retail demands.

Sage Accpac Insight

Sage Accpac Insight is an enterprise-wide reporting, budgeting, and consolidations application that is ideal for employees in remote offices and disparate departments who need to manage, distribute, and collaborate from a single, unified source. It allows you to quickly capture and integrate information into meaningful reports and securely distribute them across your entire enterprise on demand.

ACCPAC CFO

ACCPAC CFO is a financial diagnostic tool that helps you better understand the implications of specific business decisions, identify the most effective use of financial resources, and measure the profitability of virtually every business goal.

Sage Accpac Hosted Services

Sage Accpac Online offers small and midsized businesses online access to the power of Sage Accpac end-to-end business management applications. Sage Accpac hosted services address every aspect of your company’s business management needs so you can share critical data to make more informed business decisions.

About Sage Software

Sage Software (formerly Best Software) offers leading business management products and services that give more than 2.4 million small and midsize customers in North America the insight for success throughout the lives of their businesses. Its parent company, The Sage Group plc (London: SGE.L), supports 4.4 million customers worldwide.

For more than 25 years, Sage Software has delivered easy-to-use, scalable and customizable applications through its portfolio of leading solutions, including Sage Abra, Sage Accpac, Sage Pro, ACT! by Sage, Sage BusinessVision, Sage CPA Practice Manager, Sage CPA Accounting, Sage FAS Fixed Assets, Sage MAS 90 ERP, Sage MAS 200 ERP, Sage MAS 500 ERP, Sage MIP Fundraising, Peachtree by Sage, Sage CRM, and Sage Timberline Office, among many others.

Sage Software Offers Fully Integrated Business Management Applications

- Accounting and Operations
- Customer Relationship Management (CRM)
- Human Resource Management
- Warehouse Management
- Electronic Data Interchange (EDI)
- E-commerce
- Point of Sale
- Project and Job Costing
- Business Analytics
- Enterprise Reporting
- Hundreds of Industry-Specific Solutions



Sage Software Offers Unmatched Freedom of Choice

- True integration across applications
- Advanced Web and wireless access
- Flexible deployment and purchasing options
- Scalable, open architecture
- Advanced customization
- Microsoft Windows or Linux operating system support
- IBM DB2, Microsoft SQL Server, Oracle, and Pervasive.SQL database support
- Full multilingual and multicurrency capabilities
- And much more!

Visit us at www.sagesoftware.com or call 800-873-7282 today for more information about our end-to-end business management applications.

ACCPAC International, Inc.
A Sage Software Company
6700 Koll Center Parkway
Third Floor
Pleasanton, CA 94566

925-461-2625
800-873-7282
www.sagesoftware.com

